

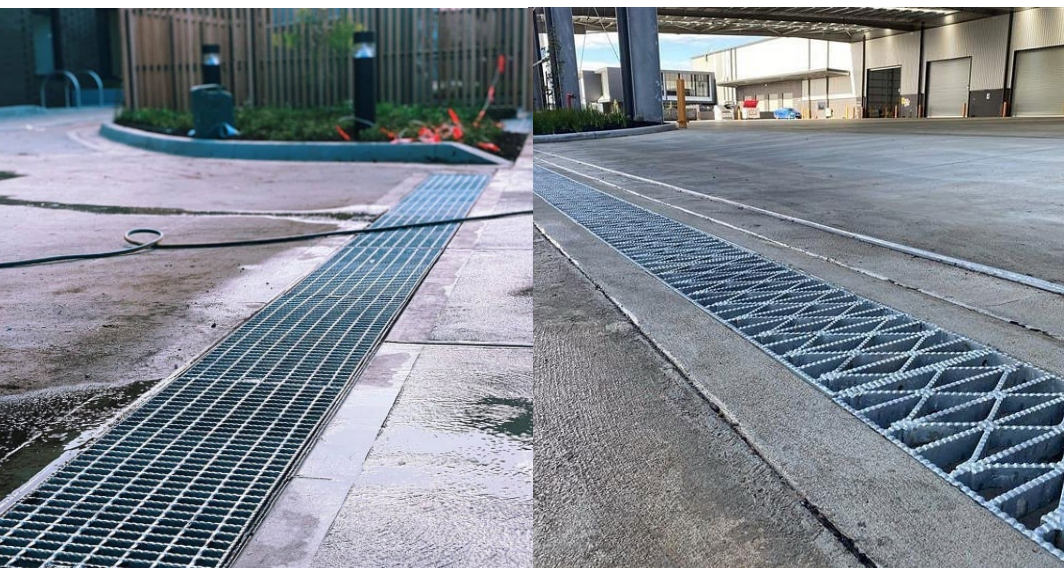


# TRENCH GRATING





# **RESIDENTIAL & COMMERCIAL TRENCH GRATING**



## **Product Overview**

Trench grating consists of a linear drainage channel covered by a protective grate, engineered to efficiently collect surface water across expansive areas and direct it into an integrated water management system. The dimensions of the drain required are determined by the contributing surface area and gradient, while the grate's design and load rating are selected according to anticipated traffic conditions as well as safety and aesthetic considerations.

## **Available Product Types**

- EGAL – Classes B & C (AS3996:2019)
- Heel Guard – Classes B & D (AS3996:2019)
- Weaved – Class D (AS3996:2019)
- Stainless Steel – Classes A & B (AS3996:2019)



## **DID YOU KNOW...?**

Each year R&S supplies over 25km of trench grating into the Australian market. We estimate that over the years we've supplied enough to build a drain from Melbourne to Mildura!



## **MATERIAL**

Available in Galvanised Mild Steel, Galvanised or Black (Epoxy) Ductile Iron & Grade 316 Stainless Steel.



## **AS3996:2019 LOAD RATINGS**

Class A – Extra Light Duty  
Class B – Light Duty  
Class C – Medium Duty  
Class D – Heavy Duty  
Class E – Extra Heavy Duty



## **RECYCLED MATTERS**

Ductile iron contains 40–60% recycled content and is fully recyclable; mild steel has 10–12% recycled content and is also fully recyclable; PVC can be recycled through industrial and chemical processes.





# PVC TRENCH GRATING OVERVIEW

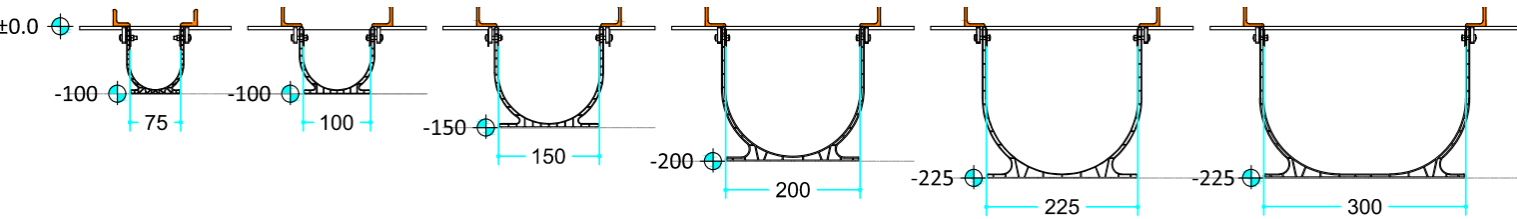
R&S Grating’s modular trench drain system is engineered for efficient site installation and long-term structural performance. It is available in six standard internal widths and comprises a non-loadbearing PVC trench formwork coupled with a load bearing galvanised mild steel frame.

The PVC trench functions as in-situ formwork, delivering a sealed channel and eliminating the need for conventional timber boxing prior to concrete placement. The galvanised steel frame incorporates integrated concrete anchors and is designed to serve as the primary load transfer interface, distributing imposed loads into the surrounding slab structure.

Modules are supplied in five standard lengths and can be linearly connected on-site to achieve the required overall drain run. The system is compatible with four R&S Grating trench grate profiles, each engineered to suit specific load classifications, pedestrian safety criteria, and architectural requirements.

## Available PVC Trench Sizes

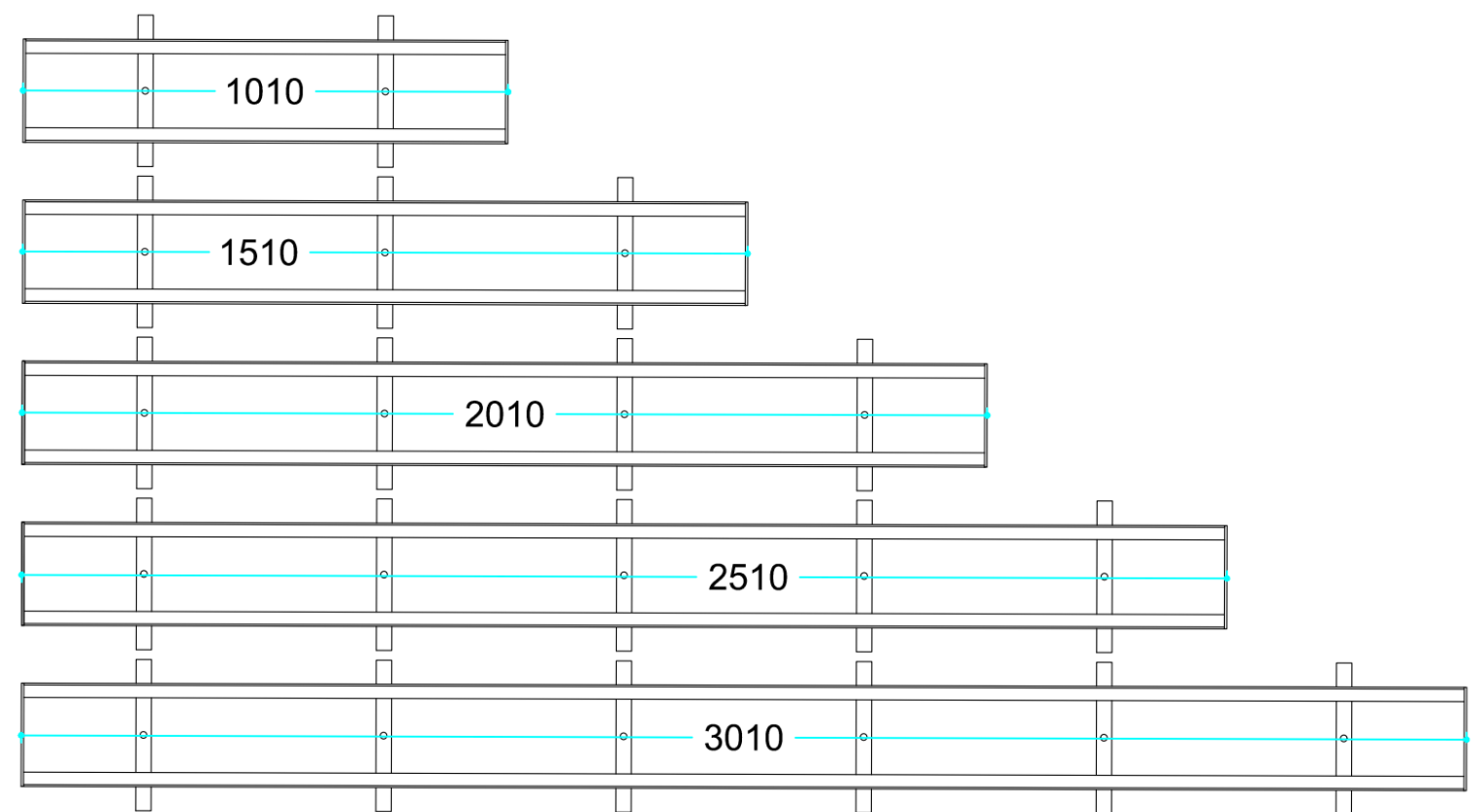
R&S Grating’s PVC trench is available in 75x100mm, 100x100mm, 150x150mm, 200x200mm, 225x225mm and 300x225mm internal sizes, given below.



## Available PVC Trench Lengths

R&S Grating’s PVC trench units are available in five standard internal lengths: 1000 mm, 1500 mm, 2000 mm, 2500 mm, and 3000 mm. These modules are designed for on-site assembly and can be joined to achieve any specified overall length, with increments of 500 mm.

For applications requiring non-standard dimensions, custom lengths can be manufactured in-house, subject to a typical production lead time of 4–5 working days. Standard length options are detailed below.





**EGAL**



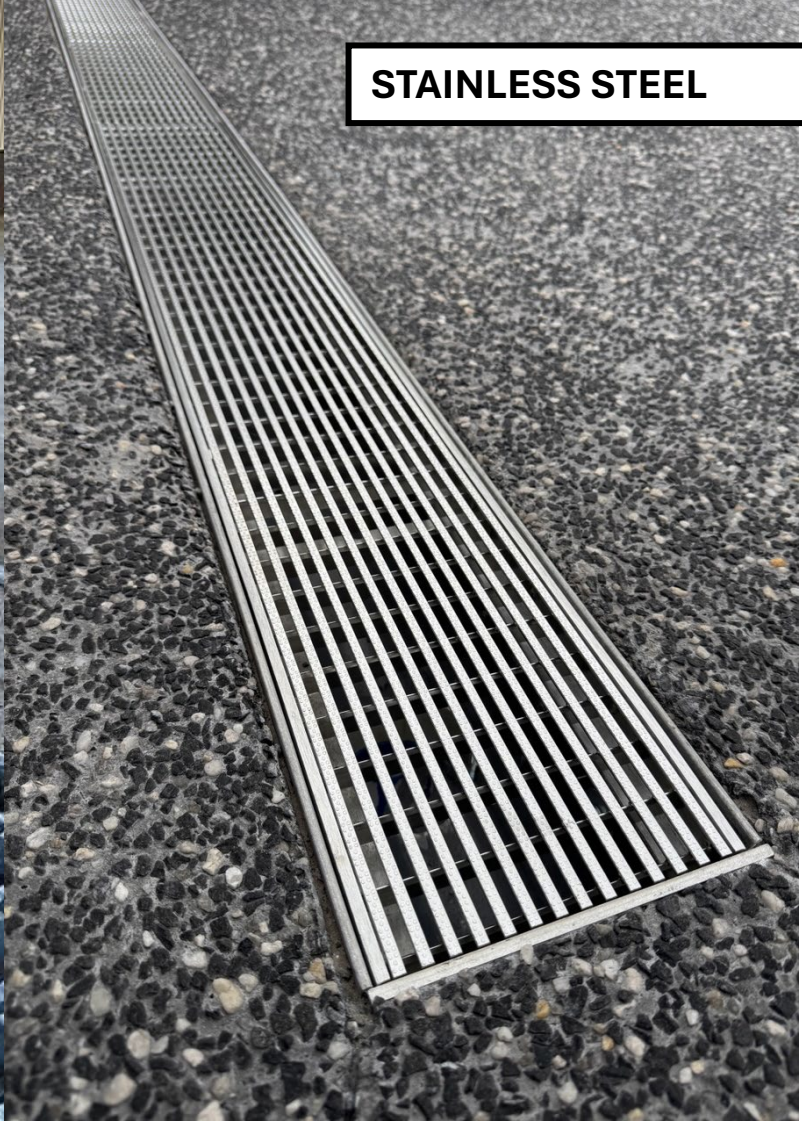
**HEEL GUARD**



**WEAVED**



**STAINLESS STEEL**





# AVAILABLE TRENCH GRATE TYPES

R&S Grating’s trench system features four grate styles, each tailored for specific load, traffic, and design needs. Recommended applications for each are outlined below.

## EGAL

- Recommended Areas (Class B):** Residential driveways, shared residential driveways, and small car parks.
- Recommended Areas (Class C):** Larger shared residential driveways (e.g. apartment complexes), commercial car parks, and areas with regular vehicle access including light trucks.

EGAL grates feature a traditional mesh design, offering a cost-effective solution for general-purpose drainage. They are available in Class B and Class C load ratings in accordance with AS 3996:2019, supplied in 1000 mm and 500 mm lengths.

## HEEL GUARD

- Recommended Areas (Class B):** Residential driveways, shared residential driveways, and small car parks.
- Recommended Areas (Class D):** Commercial driveways, hospitals, minor roads, and areas accessed by forklifts or heavy commercial vehicles, with frequent pedestrian and wheelchair access.

Heel Guard grates are designed with narrow apertures to prevent intrusion by high-heeled footwear and wheelchair tyres. They are suitable for environments requiring both vehicular durability and pedestrian safety. Available in Class B and Class D load ratings under AS 3996:2019, Heel Guard grates are supplied in 500 mm lengths with either a black epoxy-coated or hot-dip galvanised finish

## WEAVED

- Recommended Areas (Class D):** Factories and complexes with forklifts and heavy vehicles, major roads.
- Weaved trench grates are available in class D and recommended for any areas with highly concentrated wheel loads.

## STAINLESS STEEL

- Recommended Areas (Class A):** Patio, pool areas, balconies. Areas accessible strictly by pedestrians and not vehicles.
- Recommended Areas (Class B):** Residential driveways and areas accessible by slow moving, occasional vehicles.

Crafted from Marine Grade 316 stainless steel, these grates combine durability with refined aesthetics. Their heel- and wheelchair-safe design makes them ideal for high-visibility pedestrian areas such as pools, beaches, and landscaped zones. Available in Class A for pedestrian-only access and Class B for light residential vehicle loading.

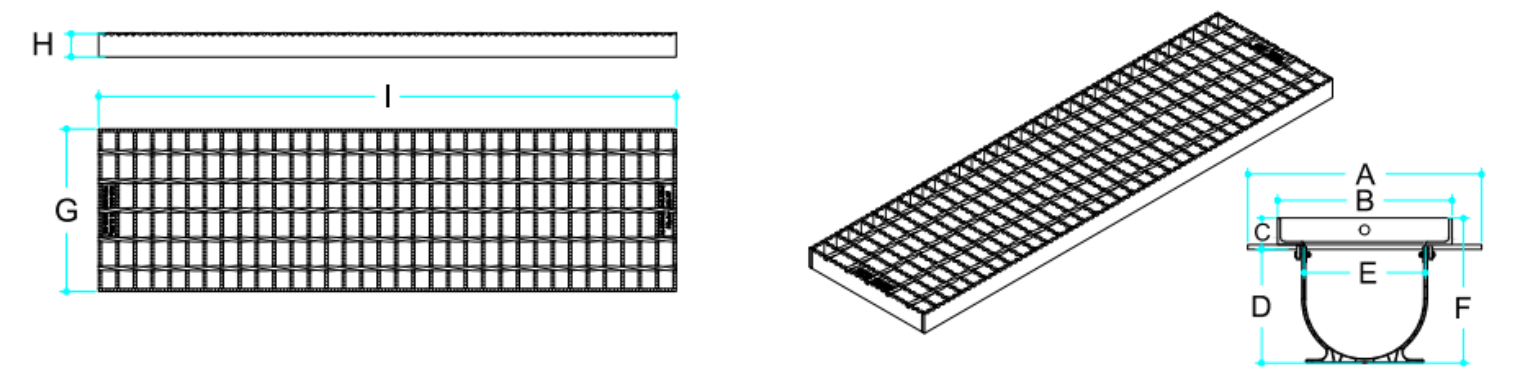
	Available Sizes						Available Load Ratings				Features		
	75mm Internal	100mm Internal	150mm Internal	200mm Internal	225mm Internal	300mm Internal	Class A	Class B	Class C	Class D	Bike Safe	High Heel Safe	Anti-Slip
EGAL		✓	✓	✓	✓	✓		✓	✓		✓		✓
HEEL GUARD		✓	✓	✓	✓	✓		✓		✓	✓	✓	✓
WEAVED		✓	✓	✓	✓	✓				✓	✓		✓
STAINLESS STEEL	✓	✓	✓				✓	✓			✓	✓	✓







# EGAL TRENCH GRATING



EGAL trench grates are available with the following dimensions.

## EGAL TRENCH GRATING (CLASS B)

Product Code	E Clear Opening Width (mm)	D Clear Opening Depth (mm)	G x H x I Grate Size (mm)	F Overall Product Depth (mm)	A Crossbar Overall Size (mm)
PTG-L-MSG-E100	100	100	150 x 25 x 1000 or 150 x 25 x 500	130	265
PTG-L-MSG-E150	150	150	200 x 25 x 1000 or 200 x 25 x 500	180	315
PTG-L-MSG-E200	200	200	250 x 25 x 1000 or 250 x 25 x 500	230	360
PTG-L-MSG-E225	225	225	275 x 25 x 1000 or 275 x 25 x 500	255	390
PTG-L-MSG-E300	300	225	350 x 25 x 1000 or 350 x 25 x 500	255	460

## EGAL TRENCH GRATING (CLASS B)

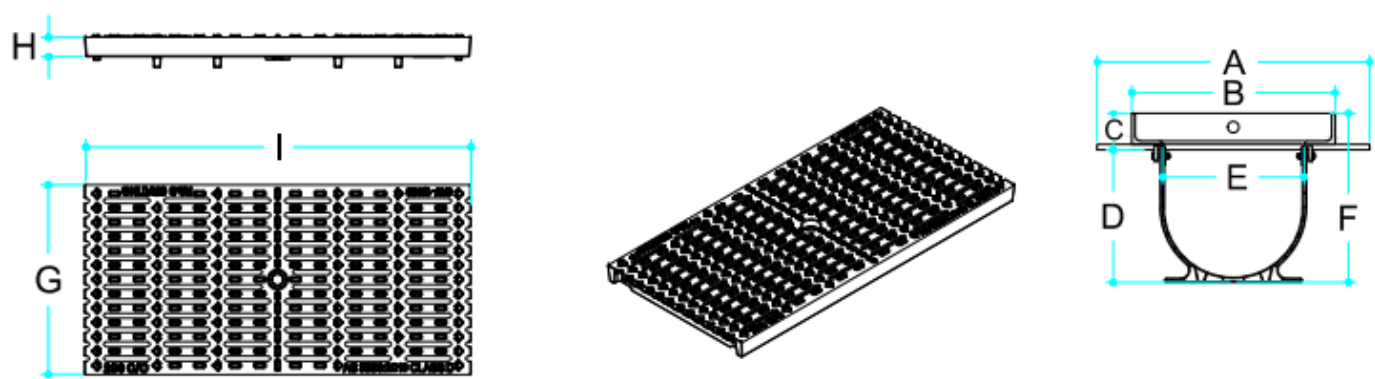
Product Code	E Clear Opening Width (mm)	D Clear Opening Depth (mm)	G x H x I Grate Size (mm)	F Overall Product Depth (mm)	A Crossbar Overall Size (mm)
PTG-M-MSG-E150	150	150	230 x 40 x 1000 or 230 x 40 x 500	180	315
PTG-M-MSG-E200	200	200	280 x 40 x 1000 or 280 x 40 x 500	230	360
PTG-M-MSG-E225	225	225	305 x 40 x 1000 or 305 x 40 x 500	255	390
PTG-M-MSG-E300	300	225	380 x 40 x 1000 or 380 x 40 x 500	255	460







# HEEL GUARD TRENCH GRATING



Heel Guard trench grates are available with the following dimensions.

## HEEL GUARD TRENCH GRATING (CLASS B)

Product Code	E Clear Opening Width (mm)	D Clear Opening Depth (mm)	G x H x I Grate Size (mm)	F Overall Product Depth (mm)	A Crossbar Overall Size (mm)
PTG-L-DG-150L	150	150	200 x 25 x 500	180	315
PTG-L-DG-200L	200	200	250 x 25 x 500	230	360
PTG-L-DG-225L	225	225	275 x 25 x 500	255	390
PTG-L-DG-300L	300	225	350 x 25 x 500	255	460

## HEEL GUARD TRENCH GRATING (CLASS D)

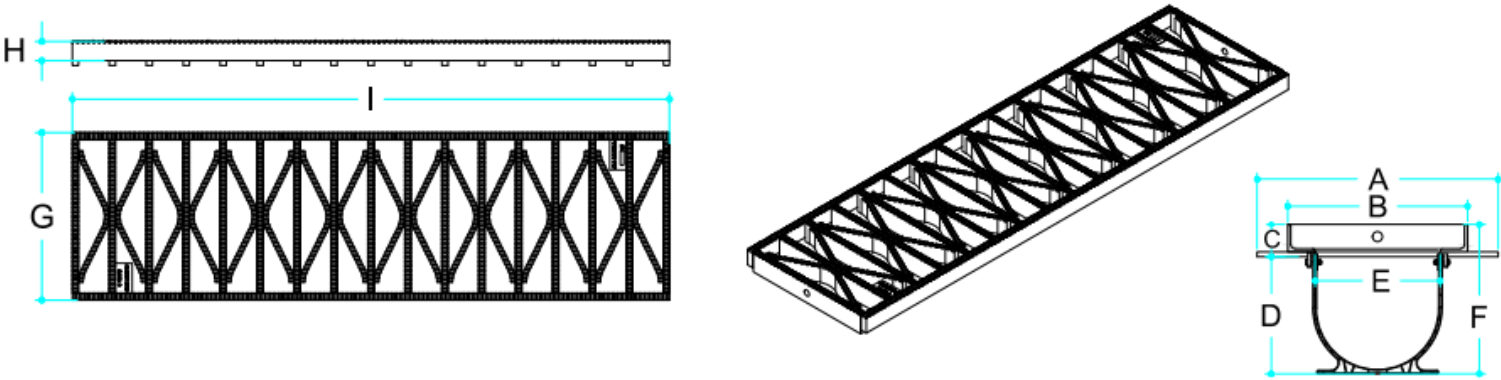
Product Code	E Clear Opening Width (mm)	D Clear Opening Depth (mm)	G x H x I Grate Size (mm)	F Overall Product Depth (mm)	A Crossbar Overall Size (mm)
PTG-H-DG-100L	100	100	150 x 25 x 500	130	265
PTG-H-DG-150L	150	150	200 x 25 x 500	180	315
PTG-H-DG-200L	200	200	245 x 25 x 500	230	360
PTG-H-DG-225L	225	225	305 x 40 x 500	270	420
PTG-H-DG-300L	300	225	380 x 40 x 500	270	495







# WEAVED TRENCH GRATING



Weaved trench grates are available with the following dimensions.

## WEAVED TRENCH GRATING (CLASS D)

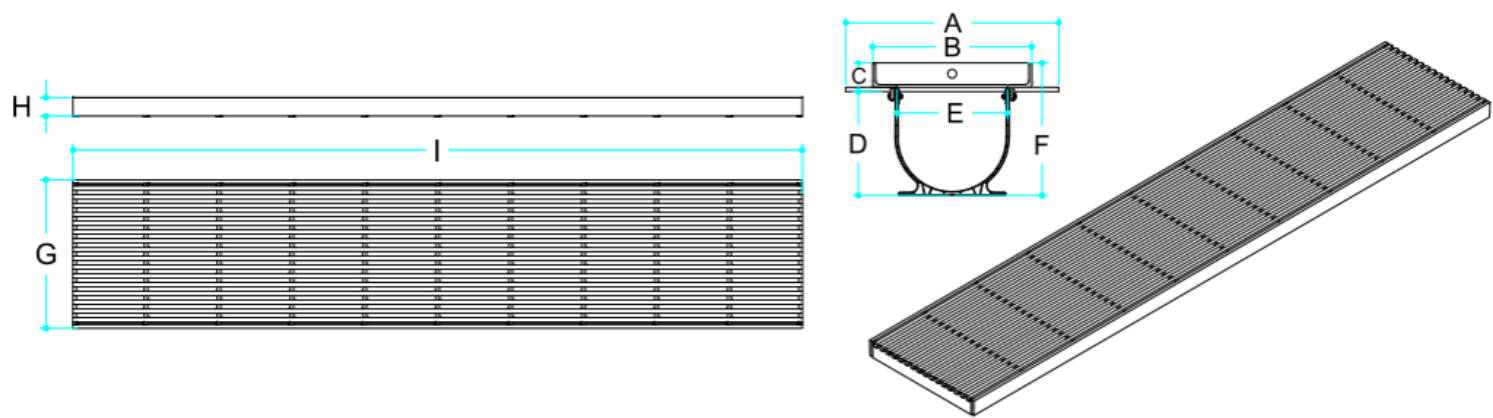
Product Code	E Clear Opening Width (mm)	D Clear Opening Depth (mm)	G x H x I Grate Size (mm)	F Overall Product Depth (mm)	A Crossbar Overall Size (mm)
PTG-H-MSG-W150	150	150	230 x 40 x 1000 or 230 x 40 x 500	195	315
PTG-H-MSG-W200	200	200	280 x 40 x 1000 or 280 x 40 x 500	245	360
PTG-H-MSG-W225	225	225	305 x 40 x 1000 or 305 x 40 x 500	270	420
PTG-H-MSG-W300	300	225	380 x 40 x 1000 or 380 x 40 x 500	270	495







# STAINLESS STEEL TRENCH GRATING



Stainless steel trench grates are available with the following dimensions.

## STAINLESS STEEL TRENCH GRATING (CLASS A)

Product Code	E Clear Opening Width (mm)	D Clear Opening Depth (mm)	G x H x I Grate Size (mm)	F Overall Product Depth (mm)	A Crossbar Overall Size (mm)
PTG-A-SS-075CO	75	100	113 x 20 x 1000 or 113 x 20 x 1500	125	226
PTG-A-SS-100CO	100	100	150 x 20 x 1000 or 150 x 20 x 1500	125	163
PTG-A-SS-150CO	150	150	200 x 20 x 1000 or 200 x 20 x 1500	175	313

## STAINLESS STEEL TRENCH GRATING (CLASS B)

Product Code	E Clear Opening Width (mm)	D Clear Opening Depth (mm)	G x H x I Grate Size (mm)	F Overall Product Depth (mm)	A Crossbar Overall Size (mm)
PTG-A-SS-100CO	100	100	150 x 25 x 1000 or 150 x 25 x 1500	130	360
PTG-A-SS-150CO	150	150	200 x 25 x 1000 or 200 x 25 x 1500	180	420